

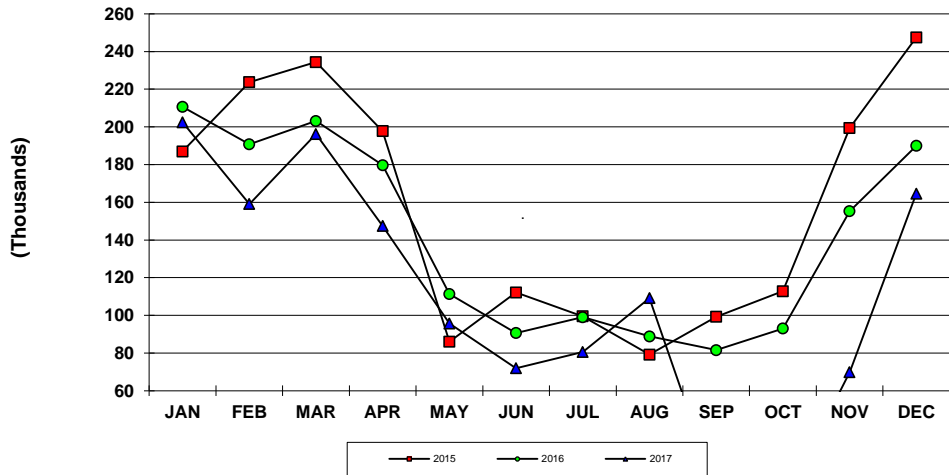
CRUISE PASSENGER ARRIVALS - U.S. Virgin Islands  
Year To Date, Monthly, Quarterly and Annual Totals  
January 2016 to December 2017

Period	ST. THOMAS/ST. JOHN			ST. CROIX			U.S.V.I., TOTAL		
	2016	2017	Percent Change	2016	2017	Percent Change	2016	2017	Percent Change
<b>YEAR TO DATE:</b>									
DECEMBER	1,694,058	1,271,669	-24.9	110,161	32,634	-70.4	1,776,735	1,304,303	-26.6
<b>MONTHLY TOTAL:</b>									
January	210,685	195,209	-7.3	27,282	7,299	-73.2	227,156	202,508	-10.9
February	190,738	154,515	-19.0	22,404	4,595	-79.5	206,594	159,110	-23.0
March	203,149	190,430	-6.3	11,629	5,835	-49.8	214,778	196,265	-8.6
April	179,676	140,504	-21.8	14,821	7,013	-52.7	187,660	147,517	-21.4
May	111,383	95,768	-14.0	3,288	-	-	111,383	95,768	-14.0
June	90,638	71,985	-20.6	-	-	-	90,638	71,985	-20.6
July	99,058	80,645	-18.6	-	-	-	99,058	80,645	-18.6
August	88,877	109,160	22.8	-	-	-	88,877	109,160	22.8
September	81,577	3,594	-95.6	3,380	3,224	-4.6	84,957	6,818	-92.0
October	93,053	-	-	2,162	-	-	95,215	-	-
November	155,245	68,699	-55.7	11,258	1,224	-89.1	166,503	69,923	-58.0
December	189,979	161,160	-15.2	13,937	3,444	-75.3	203,916	164,604	-19.3
<b>QUARTER:</b>									
First	604,572	540,154	-10.7	61,315	17,729	-71.1	648,528	557,883	-14.0
Second	381,697	308,257	-19.2	18,109	7,013	-61.3	389,681	315,270	-19.1
Third	269,512	193,399	-28.2	3,380	3,224	-4.6	272,892	196,623	-27.9
Fourth	438,277	229,859	-47.6	27,357	4,668	-82.9	465,634	234,527	-49.6
<b>ANNUAL TOTAL:</b>	<b>1,694,058</b>	<b>1,271,669</b>	<b>-24.9</b>	<b>110,161</b>	<b>32,634</b>	<b>-70.4</b>	<b>1,776,735</b>	<b>1,304,303</b>	<b>-26.6</b>

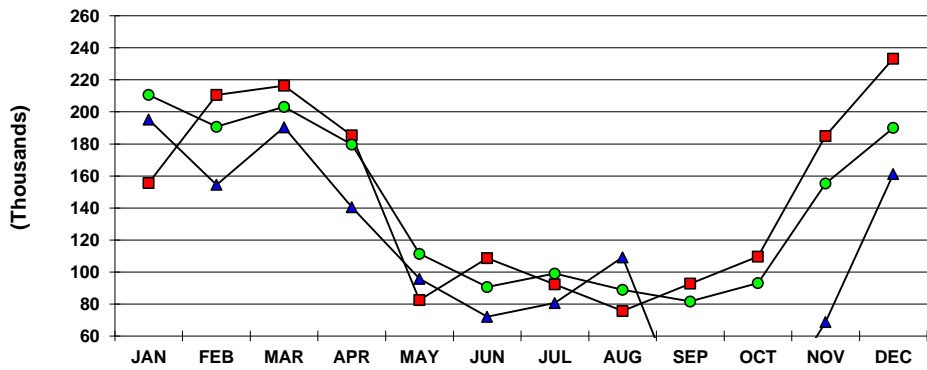
Notes:

Totals by island include first and second port of entry arrivals. Total arrivals for the U.S.V.I. include first territorial port of entry only; passengers visiting more than one U.S. Virgin Island during the same cruise are only counted once in the U.S.V.I. total. Consequently, the U.S.V.I. total will always be less than or equal to the sum of the two island totals as indicated. Data subject to revision.

**U.S.V.I. CRUISE PASSENGERS  
2015, 2016 AND 2017 YTD**



**ST. THOMAS/ST. JOHN CRUISE PASSENGERS  
2015, 2016 AND 2017 YTD**



**ST. CROIX CRUISE PASSENGERS  
2015, 2016 AND 2017 YTD**

