

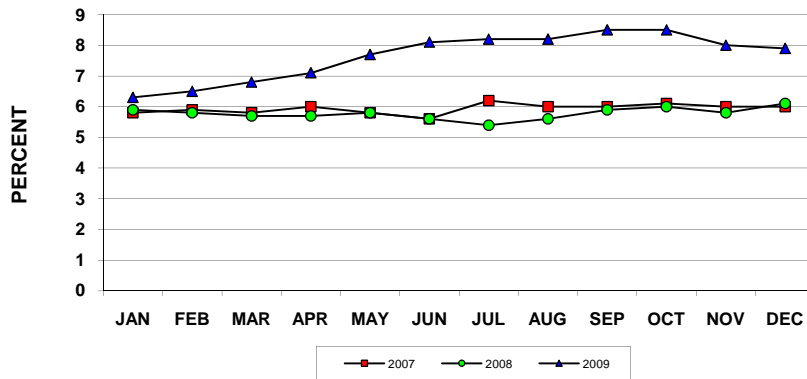
UNEMPLOYMENT RATES - U.S. Virgin Islands  
 Monthly Totals, Year To Date, Quarterly and Annual Averages  
 January 2008 to December 2009

Period	ST. THOMAS/ST. JOHN			ST. CROIX			U.S.V.I., TOTAL		
	2008	2009	Percent Change	2008	2009	Percent Change	2008	2009	Percent Change
YEAR TO DATE AVG:									
DECEMBER	4.9	6.7	1.8	6.9	8.9	2.0	5.8	7.7	1.9
MONTHLY TOTAL:									
January	4.8	5.3	0.5	7.4	7.7	0.3	5.9	6.3	0.4
February	4.9	5.5	0.6	6.9	7.7	0.8	5.8	6.5	0.7
March	4.9	5.9	1.0	6.7	8.0	1.3	5.7	6.8	1.1
April	5.0	6.1	1.1	6.7	8.3	1.6	5.7	7.1	1.4
May	4.8	6.6	1.8	7.0	9.1	2.1	5.8	7.7	1.9
June	4.8	6.9	2.1	6.7	9.5	2.8	5.6	8.1	2.5
July	4.6	6.7	2.1	6.6	10.2	3.6	5.4	8.2	2.8
August	4.7	6.7	2.0	6.8	10.2	3.4	5.6	8.2	2.6
September	5.1	7.4	2.3	6.8	9.9	3.1	5.9	8.5	2.6
October	5.1	8.2	3.1	7.2	8.8	1.6	6.0	8.5	2.5
November	5.0	7.4	2.4	6.8	8.7	1.9	5.8	8.0	2.2
December	5.2	7.2	2.0	7.3	8.9	1.6	6.1	7.9	1.8
QUARTERLY AVG:									
First	4.9	5.6	0.7	7.0	7.8	0.8	5.8	6.5	0.7
Second	4.9	6.5	1.7	6.8	9.0	2.2	5.7	7.6	1.9
Third	4.8	6.9	2.1	6.7	10.1	3.4	5.6	8.3	2.7
Fourth	5.1	7.6	2.5	7.1	8.8	1.7	6.0	8.1	2.2
ANNUAL AVG:									
	4.9	6.7	7.0	6.9	8.9	8.0	5.8	7.7	7.5

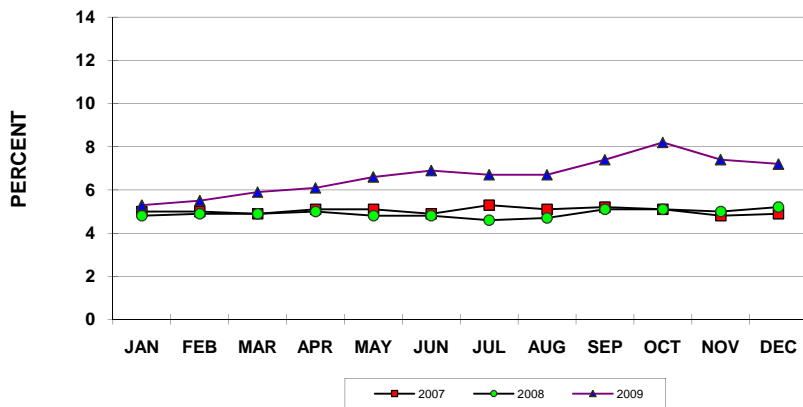
Notes:

Compiled from U.S.V.I. Bureau of Labor Statistics data. Data subject to revision.

USVI UNEMPLOYMENT RATE  
2007, 2008 AND 2009 YTD



ST. THOMAS/ST. JOHN UNEMPLOYMENT RATE  
2007, 2008 AND 2009 YTD



ST. CROIX UNEMPLOYMENT RATE  
2007, 2008 AND 2009 YTD

