

HOTEL OCCUPANCY RATES-U.S. Virgin Islands  
Year To Date, Monthly, Quarterly and Annual Totals  
January 2016 to December 2017

Period	ST. THOMAS/ST. JOHN			ST. CROIX			U.S.V.I., TOTAL		
	Percent 2016	Percent 2017	Pct. Pt. Change	Percent 2016	Percent 2017	Pct. Pt. Change	Percent 2016	Percent 2017	Pct. Pt. Change

YEAR TO DATE:

DECEMBER	59.9	40.8	-19.1	46.6	43.1	-3.5	56.7	41.3	-15.4
----------	------	------	-------	------	------	------	------	------	-------

MONTH:

January	69.8	69.8	0.0	54.2	59.5	5.3	66.2	67.4	1.2
February	69.9	72.4	2.6	68.2	67.2	-1.0	69.5	71.2	1.7
March	69.0	70.7	1.7	61.5	62.9	1.4	67.3	68.9	1.6
April	63.0	67.5	4.6	42.8	51.2	8.4	57.9	63.6	5.7
May	59.0	61.2	2.2	46.4	48.2	1.8	56.2	58.1	2.0
June	64.0	61.5	-2.5	47.1	48.8	1.7	60.1	58.5	-1.5
July	63.5	59.3	-4.2	45.9	46.1	0.3	59.1	56.0	-3.1
August	57.8	18.9	-38.9	42.7	29.7	-12.9	54.3	21.6	-32.8
September	41.2	4.0	-37.2	33.2	25.6	-7.6	39.2	9.1	-30.1
October	43.5	4.5	-38.9	30.0	28.8	-1.2	40.1	10.3	-29.8
November	54.8	6.5	-48.3	39.2	27.5	-11.8	51.0	11.6	-39.5
December	64.2	6.8	-57.4	53.6	29.5	-24.1	61.7	12.2	-49.5

QUARTER:

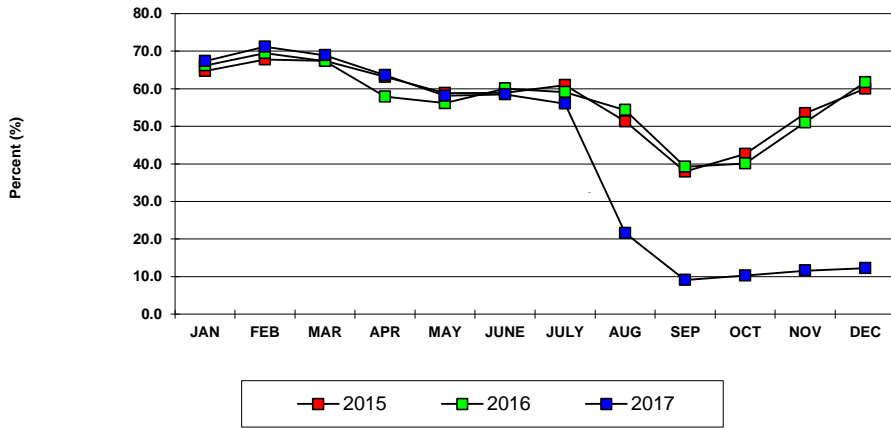
First	69.6	70.9	1.4	61.1	63.1	2.0	67.6	69.1	1.5
Second	61.9	61.9	0.0	45.3	49.4	4.0	58.0	60.1	2.0
Third	54.3	26.9	-27.4	40.6	33.8	-6.8	51.0	28.6	-22.4
Fourth	54.0	5.9	-48.1	40.4	28.6	-11.8	50.7	11.3	-39.4

ANNUAL TOTAL:	59.9	40.8	-19.1	46.6	43.1	-3.5	56.7	41.3	-15.4
---------------	------	------	-------	------	------	------	------	------	-------

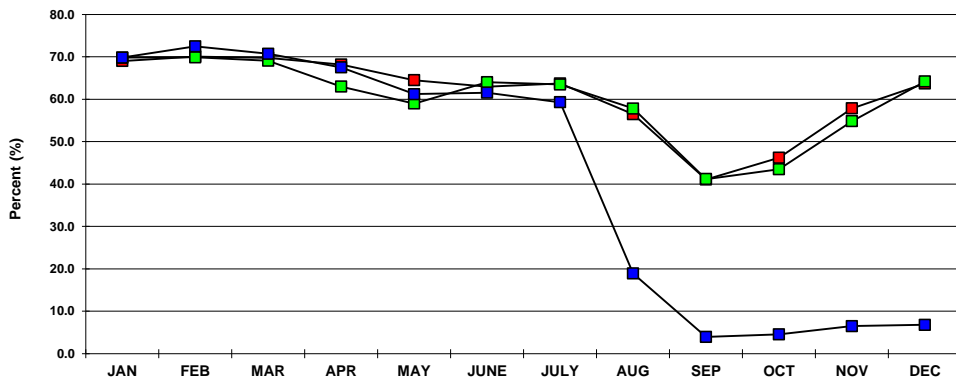
Notes:

Occupancy Rate equals reported number of room nights occupied as a percentage of reported room nights available. Percentage point change equals the absolute difference between current month and same month one year prior. Data subject to revision.

**U.S.V.I. OCCUPANCY RATES  
2015, 2016 AND 2017 YTD**



**ST. THOMAS/ST. JOHN OCCUPANCY  
2015, 2016 AND 2017 YTD**



**ST. CROIX OCCUPANCY RATES  
2015, 2016 AND 2017 YTD**

