

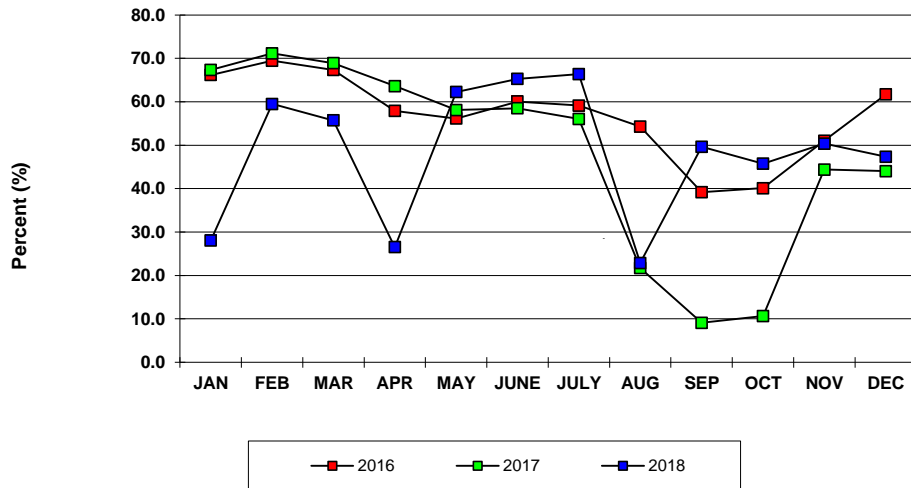
HOTEL OCCUPANCY RATES-U.S. Virgin Islands
Year To Date, Monthly, Quarterly and Annual Totals
January 2017 to December 2018

Period	ST. THOMAS/ST. JOHN			ST. CROIX			U.S.V.I., TOTAL		
	Percent 2017	Percent 2018	Pct. Pt. Change	Percent 2017	Percent 2018	Pct. Pt. Change	Percent 2017	Percent 2018	Pct. Pt. Change
YEAR TO DATE:									
DECEMBER	47.2	37.2	-10.0	46.6	54.2	7.6	47.0	43.0	-4.0
MONTH:									
January	69.8	19.2	-50.6	59.5	52.0	-7.6	67.4	28.0	-39.3
February	72.4	8.7	-63.8	67.2	62.0	-5.2	71.2	59.5	-11.7
March	70.7	52.6	-18.2	62.9	59.5	-3.4	68.9	55.7	-13.2
April	67.5	19.2	-48.3	51.2	44.7	-6.5	63.6	26.5	-37.1
May	61.2	61.8	0.6	48.2	62.8	14.6	58.1	62.3	4.1
June	61.5	65.3	3.8	48.8	65.2	16.5	58.5	65.3	6.7
July	59.3	72.7	13.4	46.1	57.4	11.3	56.0	66.4	10.3
August	19.1	18.1	-0.9	29.7	40.4	10.6	21.7	22.9	1.2
September	4.0	47.9	44.0	25.6	53.0	27.4	9.1	49.6	40.5
October	4.5	40.2	35.7	30.5	54.4	23.9	10.7	45.7	35.1
November	43.8	47.6	3.8	46.2	54.8	8.6	44.4	50.4	6.0
December	42.0	43.6	1.6	49.4	54.1	4.7	44.0	47.3	3.3
QUARTER:									
First	70.9	35.1	-35.8	63.1	57.6	-5.5	69.1	43.3	-25.8
Second	63.4	37.8	-25.5	49.4	55.8	6.4	60.1	44.2	-15.8
Third	26.9	33.4	6.5	33.8	48.9	15.1	28.6	37.8	9.2
Fourth	28.9	43.6	14.7	41.9	54.4	12.5	32.1	47.7	15.6
ANNUAL TOTAL:	47.2	37.2	-10.0	46.6	54.2	7.6	47.0	43.0	-4.0

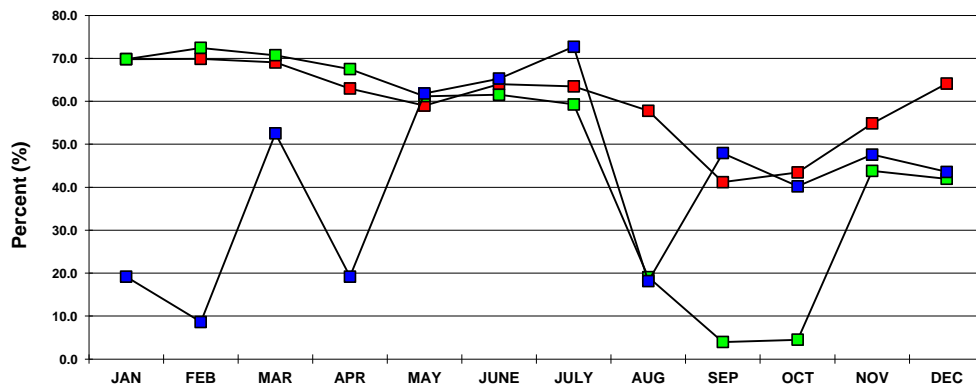
Notes:

Occupancy Rate equals reported number of room nights occupied as a percentage of reported room nights available. Percentage point change equals the absolute difference between current month and same month one year prior. Data subject to revision.

**U.S.V.I. OCCUPANCY RATES
2016, 2017 AND 2018 YTD**



**ST. THOMAS/ST. JOHN OCCUPANCY
2016, 2017 AND 2018 YTD**



**ST. CROIX OCCUPANCY RATES
2016, 2017 AND 2018 YTD**

