

HOTEL OCCUPANCY RATES-U.S. Virgin Islands
Year To Date, Monthly, Quarterly and Annual Totals
January 2015 to December 2016

Period	ST. THOMAS/ST. JOHN			ST. CROIX			U.S.V.I., TOTAL		
	Percent 2015	Percent 2016	Pct. Pt. Change	Percent 2015	Percent 2016	Pct. Pt. Change	Percent 2015	Percent 2016	Pct. Pt. Change

YEAR TO DATE:

DECEMBER	61.0	59.9	-1.1	44.5	46.4	1.8	57.1	56.7	-0.4
----------	------	------	------	------	------	-----	------	------	------

MONTH:

January	69.0	69.8	0.8	51.3	54.2	2.9	64.7	66.2	1.5
February	70.1	69.9	-0.2	60.0	68.2	8.2	67.8	69.5	1.7
March	69.8	69.0	-0.7	59.5	61.5	2.0	67.5	67.3	-0.1
April	68.2	63.0	-5.2	46.9	42.8	-4.1	63.2	57.9	-5.2
May	64.5	58.6	-5.8	40.4	46.4	6.0	58.9	55.9	-3.0
June	62.9	63.9	1.0	46.7	44.5	-2.2	58.9	59.2	0.3
July	63.7	63.5	-0.2	52.2	45.9	-6.3	60.9	59.1	-1.8
August	56.5	57.8	1.4	35.2	42.7	7.4	51.3	54.3	3.0
September	41.1	41.3	0.2	28.5	33.2	4.7	37.9	39.3	1.3
October	46.2	43.5	-2.7	31.1	30.0	-1.1	42.6	40.2	-2.5
November	57.9	54.9	-2.9	39.2	39.2	0.1	53.4	51.1	-2.3
December	63.7	64.3	0.6	47.6	53.6	5.9	60.0	61.8	1.8

QUARTER:

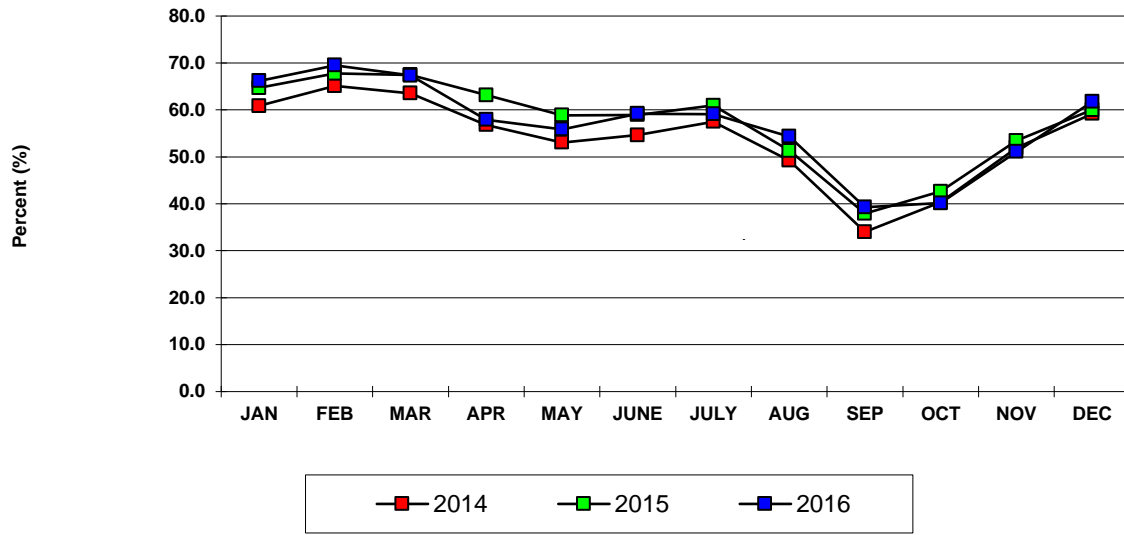
First	69.6	69.6	0.0	56.7	61.1	4.4	66.6	67.6	1.0
Second	65.2	61.8	-3.4	44.7	44.5	-0.2	60.3	57.6	-2.6
Third	53.8	54.4	0.5	38.4	40.6	2.1	50.1	51.0	1.0
Fourth	55.8	54.0	-1.8	39.1	40.4	1.3	51.9	50.7	-1.2

ANNUAL TOTAL:	61.0	59.9	-1.1	44.5	46.4	1.8	57.1	56.7	-0.4
---------------	------	------	------	------	------	-----	------	------	------

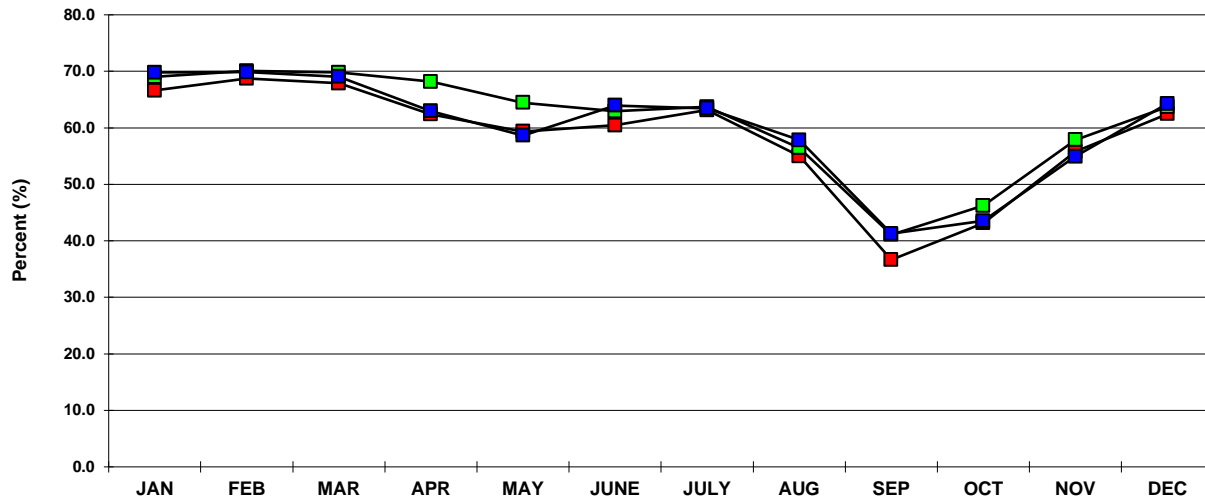
Notes:

Occupancy Rate equals reported number of room nights occupied as a percentage of reported room nights available. Percentage point change equals the absolute difference between current month and same month one year prior. Data subject to revision. **Please note this report is missing data related to several accomodation establishments. The report will be revised in the near future.**

**U.S.V.I. OCCUPANCY RATES
2014, 2015 AND 2016 YTD**



**ST. THOMAS/ST. JOHN OCCUPANCY
2014, 2015 AND 2016 YTD**



**ST. CROIX OCCUPANCY RATES
2014, 2015 AND 2016 YTD**

