

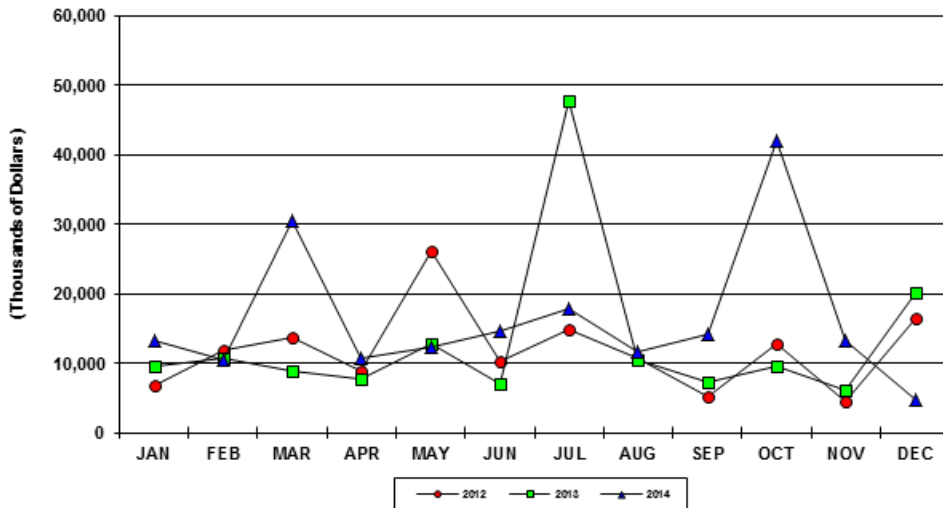
TOTAL CONSTRUCTION PERMIT VALUE - U.S. Virgin Islands
Year To Date, Monthly, Quarterly and Annual Totals
In Thousands of Dollars, January 2013 to December 2014

Period	ST. THOMAS/ST. JOHN			ST. CROIX			U.S.V.I., TOTAL		
	2013	2014	Percent Change	2013	2014	Percent Change	2013	2014	Percent Change
YEAR TO DATE:									
DECEMBER	114,870	142,063	23.7	43,672	53,827	23.3	158,542	195,890	23.6
MONTH:									
January	7,662	10,309	34.5	2,001	2,926	46.2	9,664	13,235	37.0
February	7,081	4,277	-39.6	3,633	6,154	69.4	10,714	10,431	-2.6
March	4,522	26,061	476.3	4,491	4,562	1.6	9,013	30,622	239.7
April	1,513	4,498	197.3	6,269	6,267	0.0	7,782	10,765	38.3
May	9,370	7,887	-15.8	3,541	4,526	27.8	12,911	12,413	-3.9
June	2,922	13,597	365.3	4,061	1,070	-73.6	6,983	14,668	110.0
July	44,770	7,153	-84.0	3,037	10,725	253.1	47,808	17,878	-62.6
August	5,811	7,606	30.9	4,633	4,002	-13.6	10,444	11,608	11.1
September	4,274	6,111	43.0	2,997	8,193	173.4	7,271	14,303	96.7
October	5,775	39,384	582.0	3,765	2,609	-30.7	9,540	41,993	340.2
November	3,754	10,964	192.1	2,464	2,242	-9.0	6,218	13,206	112.4
December	17,415	4,217	-75.8	2,778	550	-80.2	20,193	4,767	-76.4
QUARTER:									
First	19,265	40,646	111.0	10,126	13,642	34.7	29,391	54,288	84.7
Second	13,805	25,982	88.2	13,871	11,864	-14.5	27,676	37,846	36.7
Third	54,856	20,869	-62.0	10,667	22,921	114.9	65,523	43,790	-33.2
Fourth	26,944	54,565	102.5	9,007	5,401	-40.0	35,952	59,966	66.8
ANNUAL TOTAL:	114,870	142,063	23.7	43,672	53,827	23.3	158,542	195,890	23.6

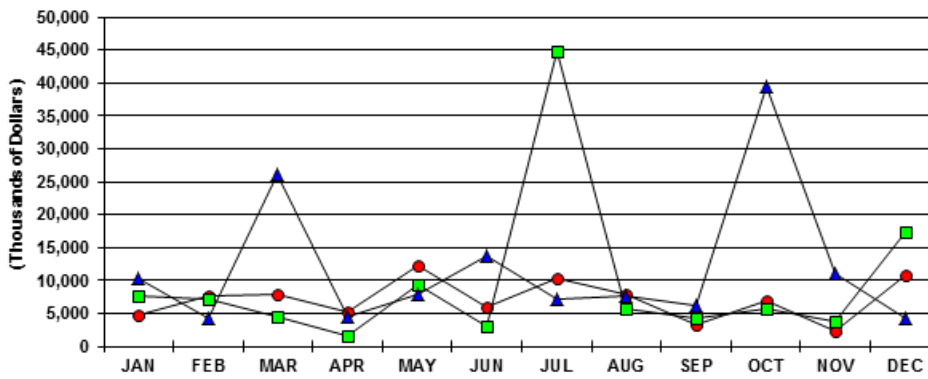
Notes:

Value of all types of intended building construction. Compiled from Dept. of Planning and Natural Resources approved permits for which estimated value is available. Construction relating to Hess Oil Virgin Islands is exempt from the permit process. [-] denotes data unavailable or not presented due to extreme fluctuations of percent changes. Data subject to revision.

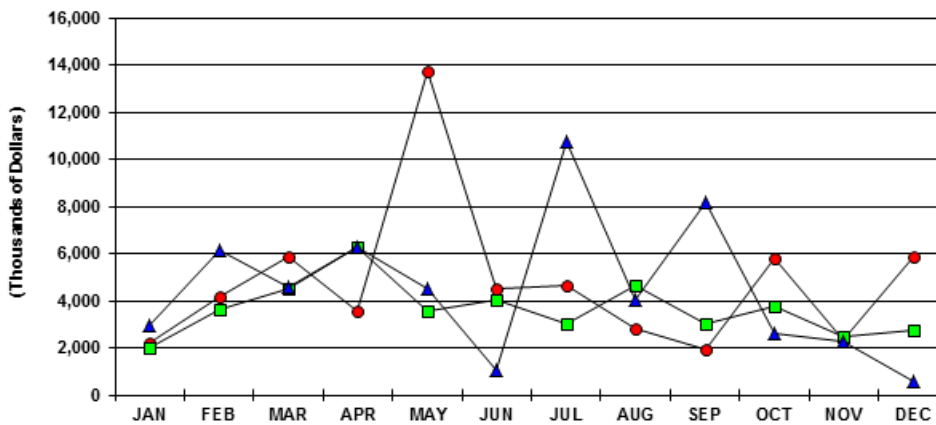
U.S.V.I. TOTAL PERMIT VALUE
2012 2013 AND 2014 YTD



ST. THOMAS/JOHN TOTAL PERMIT VALUE
2012, 2013 AND 2014 YTD



ST. CROIX TOTAL PERMIT VALUE
2012 2013 AND 2014 YTD



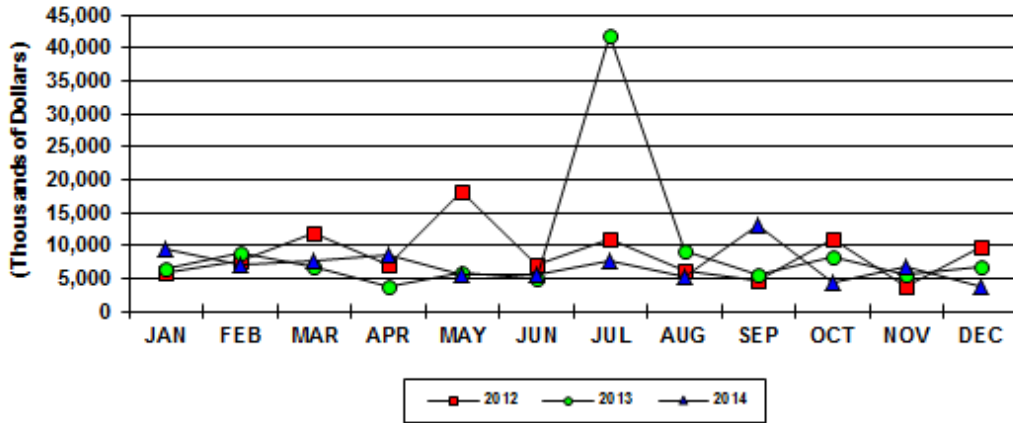
PRIVATE RESIDENTIAL CONSTRUCTION PERMITS VALUE - U.S. Virgin Islands
Year To Date, Monthly, Quarterly and Annual Totals
In Thousands of Dollars, January 2013 to December 2014

Period	ST. THOMAS/ST. JOHN			ST. CROIX			U.S.V.I., TOTAL		
	2013	2014	Percent Change	2013	2014	Percent Change	2013	2014	Percent Change
YEAR TO DATE:									
DECEMBER	82,892	46,815	-43.5	31,118	37,897	21.8	114,009	84,712	-25.7
MONTH:									
January	5,330	6,908	29.6	1,106	2,428	119.5	6,436	9,336	45.1
February	5,995	1,436	-76.1	2,965	5,530	86.5	8,960	6,966	-22.3
March	3,661	3,742	2.2	3,027	4,021	32.8	6,688	7,762	16.1
April	963	2,522	161.8	2,829	5,923	109.4	3,792	8,445	122.7
May	4,500	3,640	-19.1	1,487	1,849	24.4	5,986	5,489	-8.3
June	1,830	4,663	154.7	3,227	1,021	-68.4	5,057	5,684	12.4
July	39,117	5,024	-87.2	2,836	2,708	-4.5	41,954	7,732	-81.6
August	4,734	2,544	-46.3	4,362	2,827	-35.2	9,096	5,371	-41.0
September	3,479	5,064	45.5	2,047	8,124	296.9	5,526	13,188	138.6
October	5,516	2,769	-49.8	2,748	1,616	-41.2	8,264	4,385	-46.9
November	3,162	5,315	68.1	2,319	1,400	-39.6	5,481	6,715	22.5
December	4,604	3,189	-30.7	2,164	450	-79.2	6,768	3,639	-46.2
QUARTER:									
First	14,986	12,085	-19.4	7,098	11,979	68.8	22,084	24,064	9.0
Second	7,294	10,825	48.4	7,542	8,793	16.6	14,836	19,618	32.2
Third	47,331	12,631	-73.3	9,246	13,659	47.7	56,576	26,290	-53.5
Fourth	13,281	11,274	-15.1	7,232	3,465	-52.1	20,513	14,740	-28.1
ANNUAL TOTAL:	82,892	46,815	-43.5	31,118	37,897	21.8	114,009	84,712	-25.7

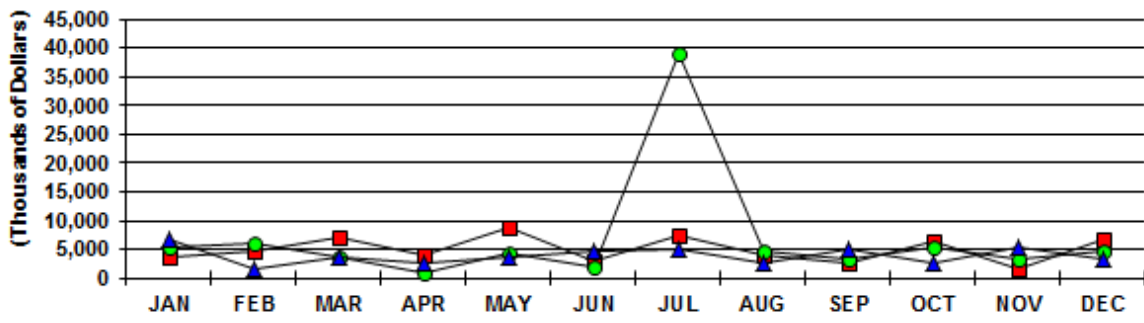
Notes:

Value of intended construction of new housekeeping residences as well as additions and alterations to existing residences. Construction relating to hotels and other structures intended for use as transient accommodations are not included. Compiled from Dept. of Planning and Natural Resources approved permits for which estimated value is available. [-] denotes data unavailable or not presented due to extreme fluctuations of percent changes. Data subject to revision.

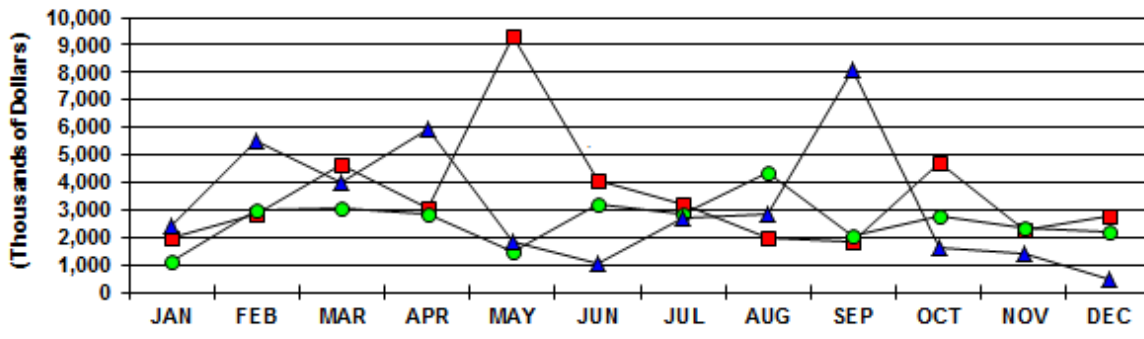
U.S.V.I PRIVATE RES. PERMIT VALUE
2012, 2013 AND 2014 YTD



ST. THOMAS/JOHN PRIV. RES. PERMIT VALUE
2012, 2013 AND 2014 YTD



ST. CROIX PRIVATE RES. PERMIT VALUE
2012, 2013 AND 2014 YTD



PRIVATE NON-RESIDENTIAL CONSTRUCTION PERMIT VALUE - U.S. Virgin Islands
 Year To Date, Monthly, Quarterly and Annual Totals
 In Thousands of Dollars, January 2013 to December 2014

Period	ST. THOMAS/ST. JOHN			ST. CROIX			U.S.V.I., TOTAL		
	2013	2014	Percent Change	2013	2014	Percent Change	2013	2014	Percent Change

YEAR TO DATE:

DECEMBER 11,074 90,777 719.7 10,351 4,937 -52.3 21,425 95,714 346.7

MONTH:

January	413	2,201	433.5	895	468	-47.7	1,307	2,669	104.1
February	1,086	1,091	0.5	669	624	-6.6	1,754	1,715	-2.2
March	411	22,249	5316.0	91	266	191.6	502	22,515	-
April	550	1,976	259.6	2,797	44	-98.4	3,347	2,020	-39.7
May	4,870	4,247	-12.8	2,054	1,138	-44.6	6,924	5,385	-22.2
June	1,092	8,185	649.5	799	46	-94.2	1,891	8,231	335.3
July	500	1,429	185.7	201	307	52.7	702	1,736	147.5
August	778	5,062	550.8	269	1,175	336.5	1,047	6,237	495.7
September	795	1,047	31.7	950	65	-93.2	1,745	1,112	-36.3
October	259	36,615	-	1,016	683	-32.8	1,275	37,298	-
November	142	5,649	-	145	21	-85.7	287	5,669	-
December	180	1,028	472.5	464	101	-78.4	644	1,128	75.2

QUARTER:

First	1,909	25,541	1237.9	1,655	1,358	-17.9	3,564	26,899	654.8
Second	6,512	14,408	121.3	5,650	1,227	-78.3	12,162	15,635	28.6
Third	2,073	7,538	263.6	1,420	1,547	8.9	3,493	9,084	160.1
Fourth	581	43,291	7353.5	1,625	805	-50.5	2,206	44,096	1898.6

ANNUAL TOTAL: 11,074 90,777 719.7 10,351 4,937 -52.3 21,425 95,714 346.7

Notes:

Value of intended private building construction exclusive of housekeeping residences. Includes hotels and other structures intended for use as transient accommodations. Compiled from Dept. of Planning and Natural Resources approved permits for which estimated value is available. Construction relating to Hess Oil Virgin Islands is exempt from the permit process. [-] denotes data not presented due to extreme fluctuations of percent changes. Data subject to revision.

PUBLIC CONSTRUCTION PERMIT VALUE - U.S. Virgin Islands
Year To Date, Monthly, Quarterly and Annual Totals
In Thousands of Dollars, January 2013 to December 2014

Period	ST. THOMAS/ST. JOHN			ST. CROIX			U.S.V.I., TOTAL		
	2013	2014	Percent Change	2013	2014	Percent Change	2013	2014	Percent Change
YEAR TO DATE:									
DECEMBER	20,905	4,470	-78.6	2,203	10,994	399.0	23,108	15,464	-33.1
MONTH:									
January	1,920	1,200	-37.5	0	30	-	1,920	1,230	-35.9
February	0	1,750	-	0	0	-	0	1,750	-
March	450	70	-84.4	1,373	275	-80.0	1,823	345	-81.1
April	0	0	-	644	300	-	644	300	-53.4
May	0	0	-	0	1,540	-	0	1,540	-
June	0	750	-	35	3	-	35	753	-
July	5,153	700	-86.4	0	7,710	-	5,153	8,410	-
August	300	0	-100.0	1	1	-	301	1	-
September	0	0	-	0	4	-	0	4	0.0
October	0	0	-	0	309	-	0	309	-
November	450	0	-	0	822	-	450	822	-
December	12,632	0	-	150	0	-	12,782	0	-
QUARTER:									
First	2,370	3,020	27.4	1,373	305	-77.8	3,743	3,325	-11.2
Second	0	750	-	679	1,843	171.5	679	2,593	282.0
Third	5,453	700	-87.2	1	7,715	-	5,454	8,415	54.3
Fourth	13,082	0	-100.0	150	1,131	654.0	13,232	1,131	-91.5
ANNUAL TOTAL:	20,905	4,470	-78.6	2,203	10,994	399.0	23,108	15,464	-33.1

Notes:

Value of intended Federal or Territory government building construction. Compiled from Dept. of Planning and Natural Resources approved permits for which estimated value is available. [-] denotes data unavailable or not present due to extreme fluctuations of percent changes.
Data subject to revision.