

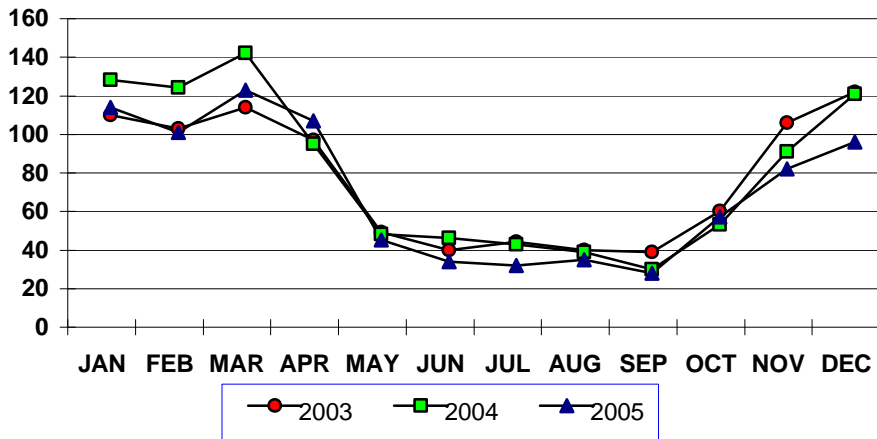
CRUISE SHIP CALLS- U.S. Virgin Islands
Year To Date, Monthly, Quarterly and Annual Totals
January 2004 to December 2005

Period	ST. THOMAS/ST. JOHN			ST. CROIX			U.S.V.I., TOTAL		
	2004	2005	Percent Change	2004	2005	Percent Change	2004	2005	Percent Change
YEAR TO DATE:									
DECEMBER	922	814	-11.7	11	34	-	924	818	-11.5
MONTH:									
January	125	111	-11.2	0	7	-	125	111	-11.2
February	121	98	-19.0	0	5	-	121	98	-19.0
March	139	118	-15.1	1	9	-	139	120	-13.7
April	92	104	13.0	0	4	-	92	104	13.0
May	44	42	-4.5	1	0	-100.0	45	42	-6.7
June	43	31	-27.9	0	0	-	43	31	-27.9
July	40	29	-27.5	0	0	-	40	29	-27.5
August	36	32	-11.1	0	0	-	36	32	-11.1
September	27	25	-7.4	0	0	-	27	25	-7.4
October	50	54	8.0	0	0	-	50	54	8.0
November	88	79	-10.2	3	4	33.3	88	79	-10.2
December	117	91	-22.2	6	5	-	118	93	-21.2
QUARTER:									
First	385	327	-15.1	1	21	-	385	329	-14.5
Second	179	177	-1.1	1	4	-	180	177	-1.7
Third	103	86	-16.5	0	0	-	103	86	-16.5
Fourth	255	224	-12.2	9	9	0.0	256	226	-
ANNUAL TOTAL:	922	814	-11.7	11	34	-	924	818	-11.5

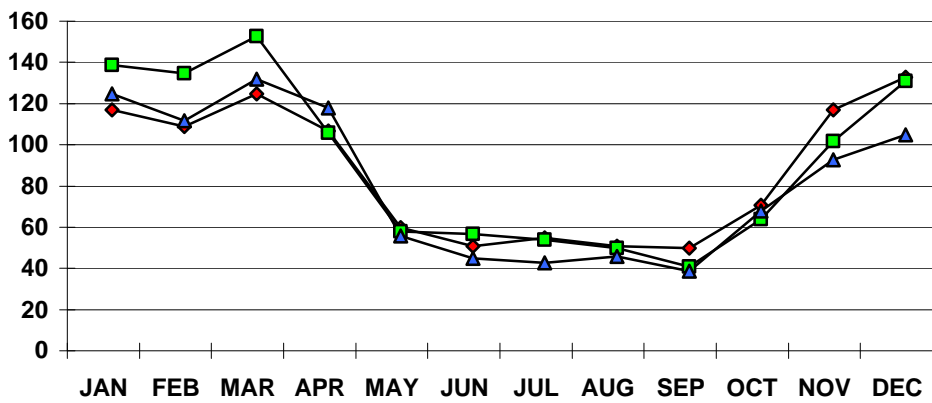
Notes:
Data subject to revision.

::

**U.S.V.I. CRUISE CALLS
2003, 2004 AND 2005 YTD**



**ST. THOMAS/ST. JOHN CRUISE CALLS
2003, 2004 AND 2005 YTD**



**ST. CROIX CRUISE CALLS
2003, 2004 AND 2005 YTD**

