

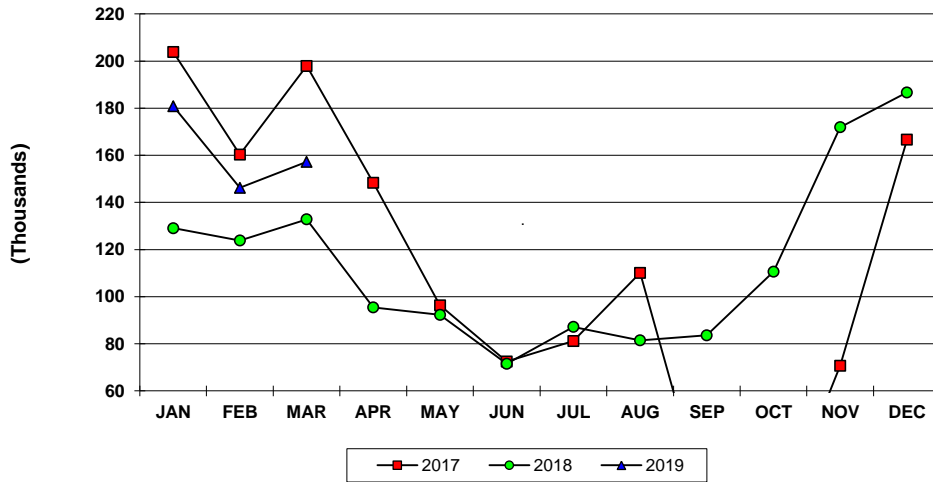
CRUISE PASSENGER ARRIVALS - U.S. Virgin Islands  
Year To Date, Monthly, Quarterly and Annual Totals  
January 2018 to March 2019

Period	ST. THOMAS/ST. JOHN			ST. CROIX			U.S.V.I., TOTAL		
	2018	2019	Percent Change	2018	2019	Percent Change	2018	2019	Percent Change
<b>YEAR TO DATE:</b>									
MARCH	385,705	460,027	19.3	31,491	26,403	-16.2	412,946	484,276	17.3
<b>MONTHLY TOTAL:</b>									
January	129,057	170,693	32.3	22,155	12,278	-44.6	146,962	180,817	23.0
February	123,823	136,456	10.2	5,510	9,745	76.9	129,333	146,201	13.0
March	132,825	152,878	15.1	3,826	4,380	14.5	136,651	157,258	15.1
April	95,448	-	-	14,493	-	-	107,460	-	-
May	92,313	-	-	2,852	-	-	91,742	-	-
June	71,482	-	-	-	-	-	71,482	-	-
July	87,199	-	-	-	-	-	87,199	-	-
August	81,431	-	-	-	-	-	81,431	-	-
September	83,631	-	-	2,841	-	-	86,472	-	-
October	110,611	-	-	2,171	-	-	112,782	-	-
November	171,912	-	-	9,096	-	-	181,008	-	-
December	186,658	-	-	16,745	-	-	198,180	-	-
<b>QUARTER:</b>									
First	385,705	460,027	19.3	31,491	26,403	-16.2	412,946	484,276	17.3
Second	259,243	-	-	7,013	-	-	270,684	-	-
Third	252,261	-	-	2,841	-	-	255,102	-	-
Fourth	469,181	-	-	28,012	-	-	491,970	-	-
<b>ANNUAL TOTAL:</b>	<b>1,366,390</b>	<b>-</b>	<b>-</b>	<b>69,357</b>	<b>-</b>	<b>-</b>	<b>1,430,702</b>	<b>-</b>	<b>-</b>

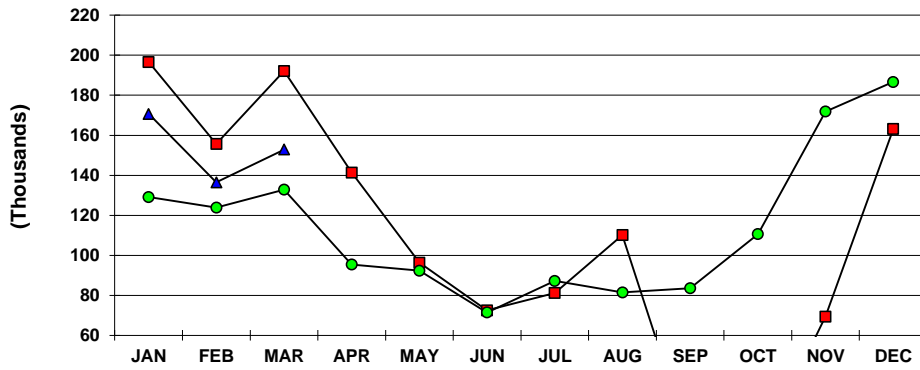
Notes:

Totals by island include first and second port of entry arrivals. Total arrivals for the U.S.V.I. include first territorial port of entry only; passengers visiting more than one U.S. Virgin Island during the same cruise are only counted once in the U.S.V.I. total. Consequently, the U.S.V.I. total will always be less than or equal to the sum of the two island totals as indicated. Data subject to revision.

**U.S.V.I. CRUISE PASSENGERS  
2017, 2018 AND 2019 YTD**



**ST. THOMAS/ST. JOHN CRUISE PASSENGERS  
2017, 2018 AND 2019 YTD**



**ST. CROIX CRUISE PASSENGERS  
2017, 2018 AND 2019 YTD**

