

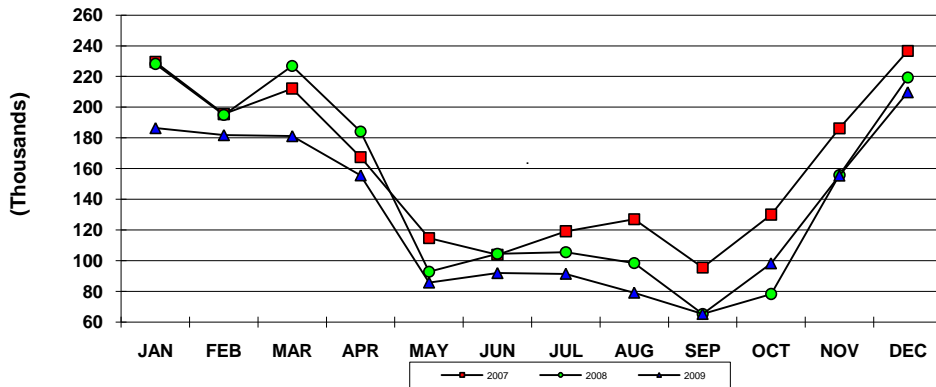
CRUISE PASSENGER ARRIVALS - U.S. Virgin Islands  
Year To Date, Monthly, Quarterly and Annual Totals  
January 2008 to December 2009

Period	ST. THOMAS/ST. JOHN			ST. CROIX			U.S.V.I., TOTAL		
	2008	2009	Percent Change	2008	2009	Percent Change	2008	2009	Percent Change
<b>YEAR TO DATE:</b>									
DECEMBER	1,754,557	1,507,623	-14.1	2,510	105,093	-	1,757,067	1,582,264	-9.9
<b>MONTHLY TOTAL:</b>									
January	228,222	184,266	-19.3	1,876	5,437	-	230,098	186,405	-19.0
February	194,928	179,797	-7.8	0	6,337	-	194,928	181,826	-6.7
March	226,876	180,520	-20.4	0	6,266	-	226,876	181,175	-20.1
April	184,125	155,626	-15.5	0	0	-	184,125	155,626	-15.5
May	92,836	79,102	-14.8	0	6,661	-	92,836	85,763	-7.6
June	104,546	85,180	-18.5	0	6,758	-	104,546	91,938	-12.1
July	105,622	84,446	-20.0	0	7,043	-	105,622	91,489	-13.4
August	98,503	72,166	-26.7	0	6,999	-	98,503	79,165	-19.6
September	65,377	58,769	-10.1	0	6,545	-	65,377	65,314	-0.1
October	78,362	84,109	7.3	0	14,196	-	78,362	98,305	25.4
November	155,791	143,036	-8.2	634	18,434	-	156,425	155,478	-0.6
December	219,369	200,606	-8.6	0	20,417	-	219,369	209,780	-4.4
<b>QUARTER:</b>									
First	650,026	544,583	-16.2	1,876	18,040	-	651,902	549,406	-15.7
Second	381,507	319,908	-16.1	0	13,419	-	381,507	333,327	-12.6
Third	269,502	215,381	-20.1	0	20,587	-	269,502	235,968	-12.4
Fourth	453,522	427,751	-5.7	634	53,047	-	454,156	463,563	2.1
<b>ANNUAL TOTAL:</b>	<b>1,754,557</b>	<b>1,507,623</b>	<b>-14.1</b>	<b>2,510</b>	<b>105,093</b>	<b>-</b>	<b>1,757,067</b>	<b>1,582,264</b>	<b>-9.9</b>

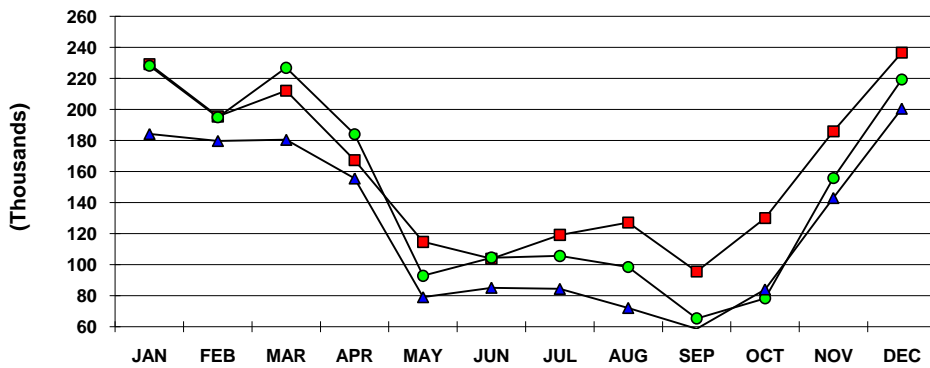
Notes:

Totals by island include first and second port of entry arrivals. Total arrivals for the U.S.V.I. include first territorial port of entry only; passengers visiting more than one U.S. Virgin Island during the same cruise are only counted once in the U.S.V.I. total. Consequently, the U.S.V.I. total will always be less than or equal to the sum of the two island totals as indicated. Data subject to revision.

**U.S.V.I. CRUISE PASSENGERS  
2007, 2008 AND 2009 YTD**



**ST. THOMAS/ST. JOHN CRUISE PASSENGERS  
2007, 2008 AND 2009 YTD**



**ST. CROIX CRUISE PASSENGERS  
2007, 2008 AND 2009 YTD**

